

# 7 Other Playback Solutions

## INTRODUCTION

Antipodes Music Servers offer a range of other playback solutions. In general these other playback solutions are not going to provide you with the same sound quality as the Roon, Squeezebox and MPD solutions.

But you may wish to use another playback solution to meet a particular need or to work with a particular device.

For most customers these other playback solutions are a secondary use of their Antipodes. For example, you might use your Antipodes with Roon to play direct to a DAC in your main system. But a secondary use might be to play from the library on your Antipodes through a SONOS system.

In most cases the relevant applications are available for your Antipodes but you need to install them first. Go to Section 8 to learn how to install them.

These include:

**DLNA/UPnP/Open Home Solutions.** This includes MinimServer and BubbleUPnP Server. These enable the Antipodes to be used as a DLNA server for DLNA renderers that you already have in your network.

**Plex Media Server** (Video, Music, Images etc). This enables serving video, provided you have a Plex player to stream to.

**SONOS Integration.** This enables your Antipodes to be a music source for your SONOS system.

**HQPlayer NAA.** This is a special purpose renderer application, to play from HQPlayer running on a Windows or Mac computer.

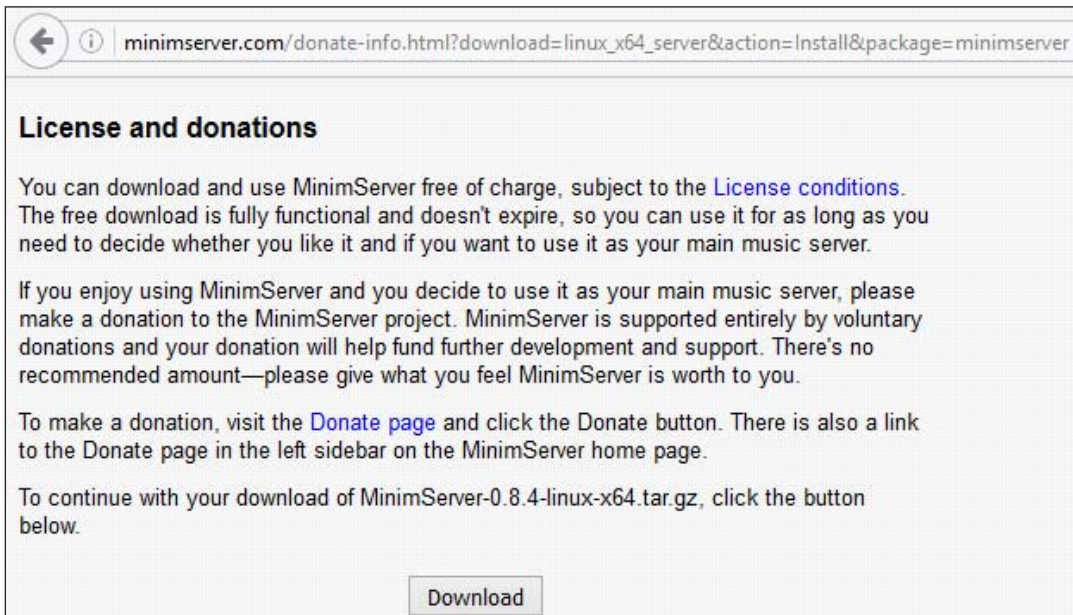
The rest of this section will get you started with each of these but you may need to visit the developer's site to get a detailed guide on how to meet your needs.

# 7.1 MinimServer

MinimServer is a UPnP/DLNA AV server that enables the music library on an Antipodes server to be accessed by DLNA-capable devices. MinimServer is not installed on Antipodes servers by default. Therefore you need to install it before you can use it.

At the Antipodes GUI, select the 'Apps' menu item, click on the 'Software Manager' icon, and then select the 'Available Apps' tab.

Click on the 'MinimServer' icon and click 'Install' to open the installation process.



Select the 'Apps' menu item in the Antipodes GUI and click on the 'MinimServer' icon.



Click on 'MinimServer Admin' to see the license terms, and accept them if you wish to proceed.

### MinimServer Status

This page was last updated at 12:14:19 on 19 Dec 2015

MinimServer 0.8.3 update 74, Copyright (c) 2012-2015 Simon Nash. All rights reserved.

Media server status for MinimServer[antipodes]: Restarting Refresh status Rescan

Your selected content directory is /storage/music

To change this, enter the full path to your new content directory in the field below and click Update.

Content directory:  Update Reset

For more information about using MinimServer, see the [Getting started](#) page.

Set the Content Directory to '/storage/music', as shown above, and select 'Update'.

#### How to Run MinimServer

After MinimServer has been installed on the Antipodes server it will start automatically and run continuously. There are no 'Start' or 'Stop' commands for MinimServer.

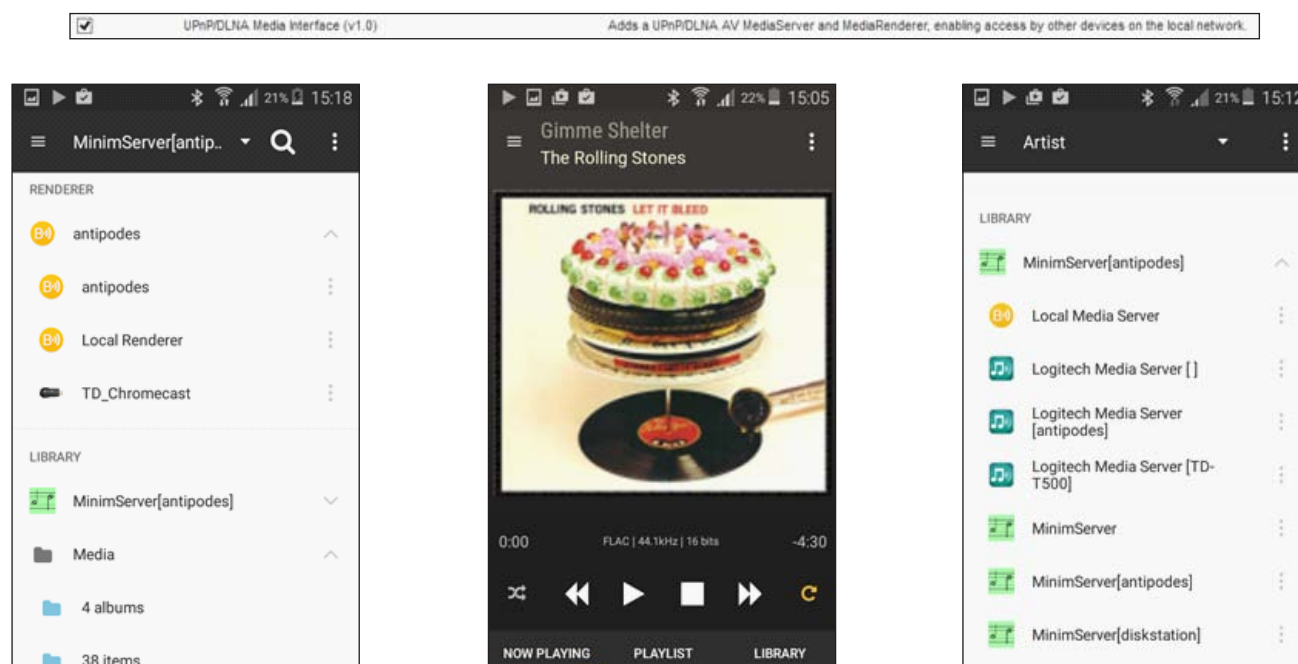
#### How to Use MinimServer

With DLNA solutions, you control the renderer device and it pulls music from DLNA servers. So running MinimServer on your Antipodes makes your

Antipodes server appear as a UPnP/DLNA server on UPnP/DLNA renderer devices on your network. These could be networked music players, computers, televisions, tablets, smartphones etc.

You can also use UPnP/DLNA apps on a tablet or smartphone as a remote control device to manage such playback solutions, selecting the DLNA servers to play from and the DLNA renderers to play to.

There are also two UPnP/DLNA renderer applications on Antipodes music servers; MPD and the UPnP/DLNA Interface plugin that is included in the Squeezebox Server, which is pre-enabled:



# 7.2 BubbleUPnP

BubbleUPnP Server is a UPnP server application enabling you to:

- Have secure Internet access to your UPnP/DLNA server content, with BubbleUPnP on a tablet and foobar2000 on a Windows device.
- Create OpenHome media renderers from any UPnP AV renderer (provides on-device playlist, and multiple Control Point access to the same renderer)
- Address some common issues with UPnP/DLNA servers (discovery issues, broken data, add some audio DLNA compliance) by creating a

proxy Media Server

- Access your UPnP/DLNA servers across different networks

BubbleUPnP Server is not installed on Antipodes servers by default. Therefore you need to install it before you can use it. Go to Section 8 for a guide to installing and uninstalling apps in the Antipodes GUI.

After installing it, set up BubbleUPnP Server by selecting the 'Apps' menu item in the Antipodes GUI, and then click on the BubbleUPnP icon.

Click 'OK' at the welcome screen.



You will be prompted to supply login details for remote access.



Leave the following screen that displays unchanged.

**BubbleUPnP Server**

Status Network and Security Media Servers Media Renderers Settings Help

Network:

If you are using a Dynamic DNS service, set your fully qualified public hostname here (example: myhost.no-ip.net).

Public host name:

Credentials:

Login:

Password:

Allow to access the server from the internet  
required by BubbleUPnP for Android and foobar2000 for Internet access

Allow to configure the server from the internet

Enable media access log file  
Log all media stream requests to file (access\_log.txt)

Click the 'Status' tab and check that the 'Internet Connectivity Test' has worked successfully, as shown below. Leave the other settings unchanged.

**BubbleUPnP Server**

Status Network and Security Media Servers Media Renderers Settings Help

Network:

Public IP Address: 199.199.0.254

Public HTTP Port: 58050

Public HTTPS Port: 58051

Public host name: 199.199.0.254.myISPwebsite.com

LAN IP Address: 192.168.1.128

HTTP: Server is reachable from internet  
 HTTPS: Server is reachable from internet

Status:

Version: 0.9-update11

Audio Transcoding supported: yes

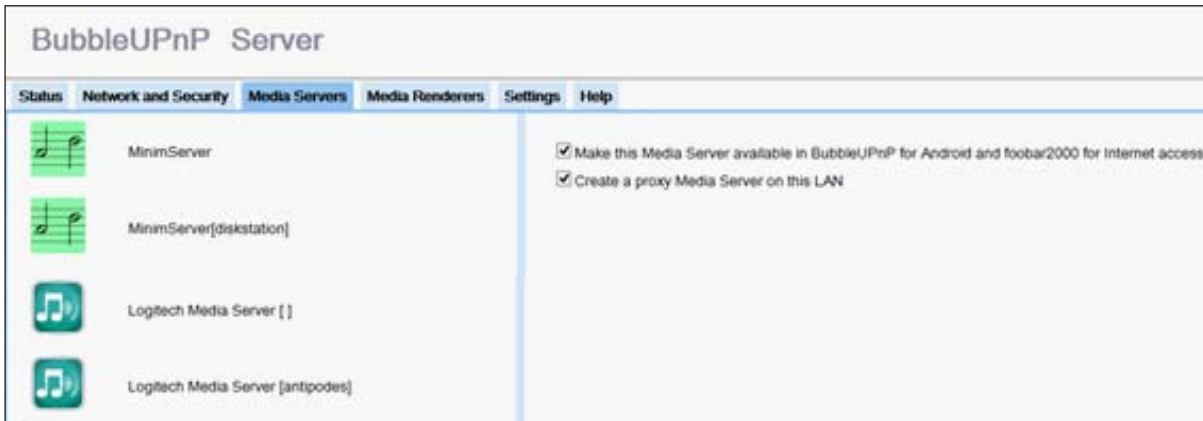
Video Transcoding supported: yes

Image Transcoding supported: yes



If the 'Internet Connectivity Test' was unsuccessful, click the 'Restart Server' button at the bottom of the screen.

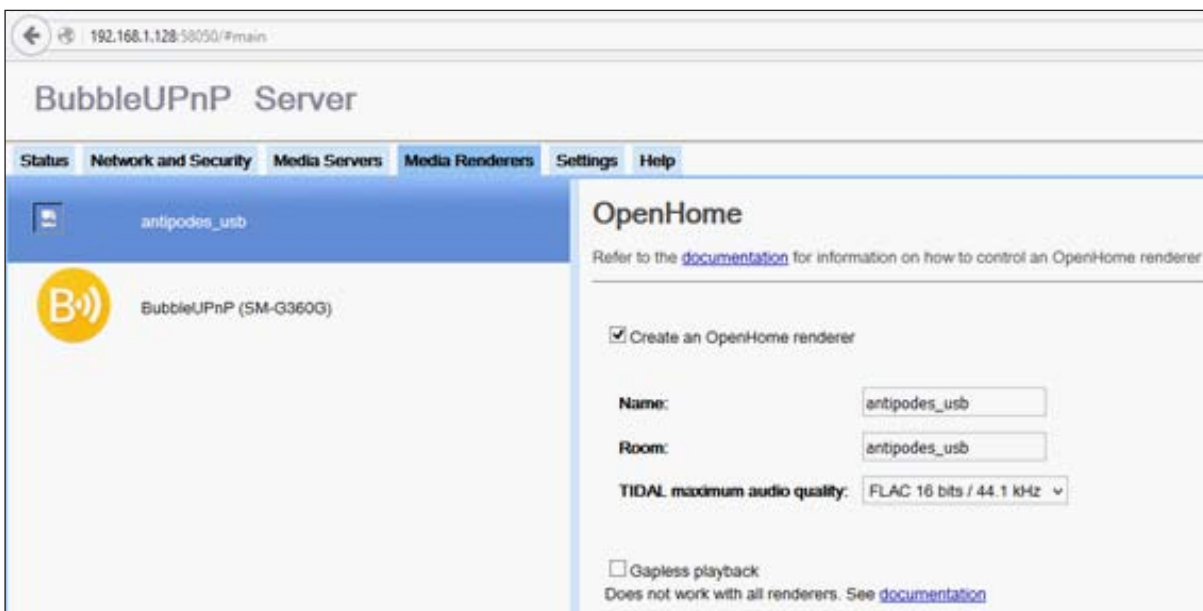
Click the 'Media Servers' tab to display the UPnP/DLNA servers that have been located on your network by BubbleUPnP.



Finally, click the 'Media Renderers' tab. This window shows the DLNA renderers that have been located on the network, in this example 'antipodes\_USB', a player on the Antipodes server, and BubbleUPnP

SM-G3600 (the local player on a Samsung Galaxy smartphone).

Check the 'Create an OpenHome renderer' box to enable OpenHome capability for the renderer.



**How to Run BubbleUPnP Server.**

After it has been successfully installed BubbleUPnP Server will be started automatically and then runs continuously. It is automatically started when the Antipodes server is powered on. It can be restarted by pressing the 'Restart Server' button on the 'Status' screen.

**BubbleUPnP Server Support**

Usage and support information for BubbleUPnP Server is available at

[www.bubblesoftapps.com/bubbleupnpserver/](http://www.bubblesoftapps.com/bubbleupnpserver/).

## 7.3 Plex Media Server

Plex is a media server application that organises video, music and photos from personal media libraries and streams them to media servers, smart TVs, streaming boxes and mobile devices that have compliant player apps.

Plex can also be setup as a DLNA server, and on the Antipodes you can use a DLNA renderer app such as MPD or Squeezelite as its music player.

You can control Plex on a Windows PC, an Apple Mac or a tablet or smartphone using one of the

DLNA remote controller apps such as BubbleUPnP, UPnPPlay, Foobar 2000 etc.

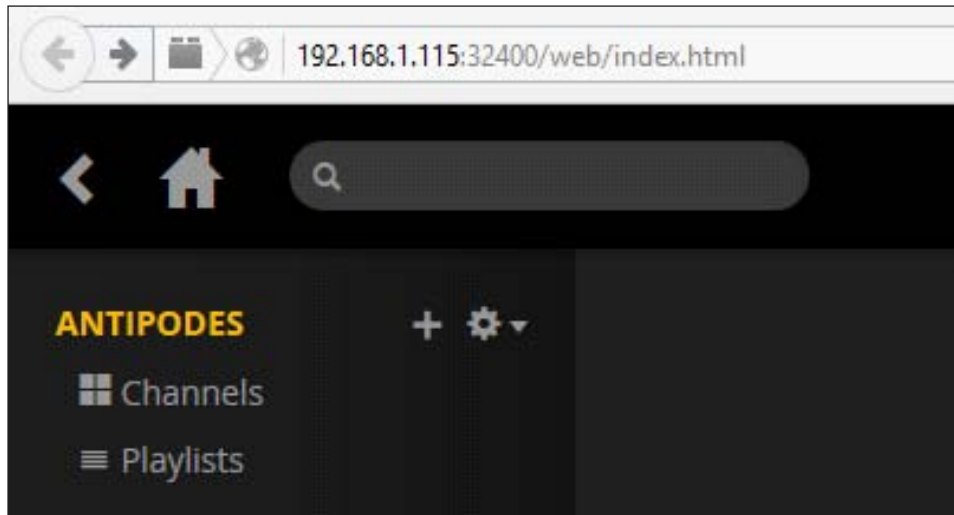
To use Plex with the Antipodes you must install the optional Plex application. Go to Section 8 for a guide to installing and uninstalling applications in the Antipodes GUI.

After installing it on your Antipodes, the first step is to use a browser to go to <https://plex.tv/>, click on 'Create Plex Account' and proceed to create your account.

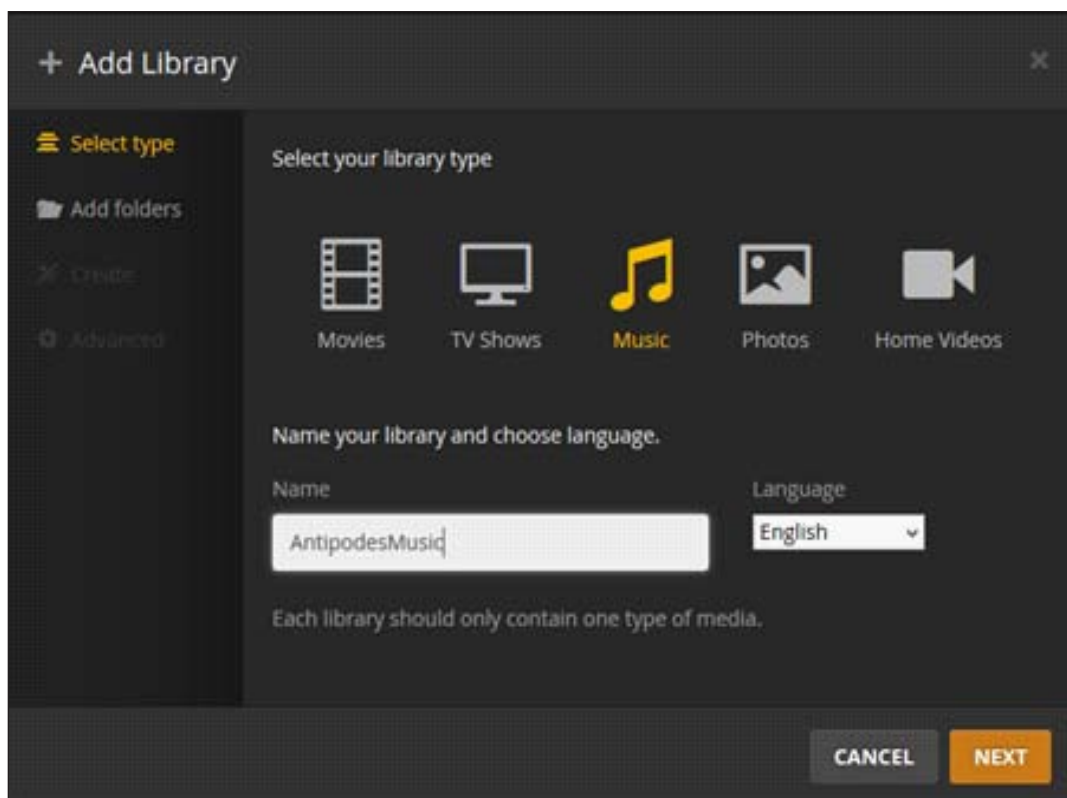
Then, back in the Antipodes GUI, select the 'Apps' menu item, and click on the 'Plex' icon. A new browser window will open where you can review and agree to the Plex Terms of Service. You will then be taken to the Plex interface.

### How to Set Up Plex

At the top left hand side of the screen click the '+' symbol next to the server name (ANTIPODES):

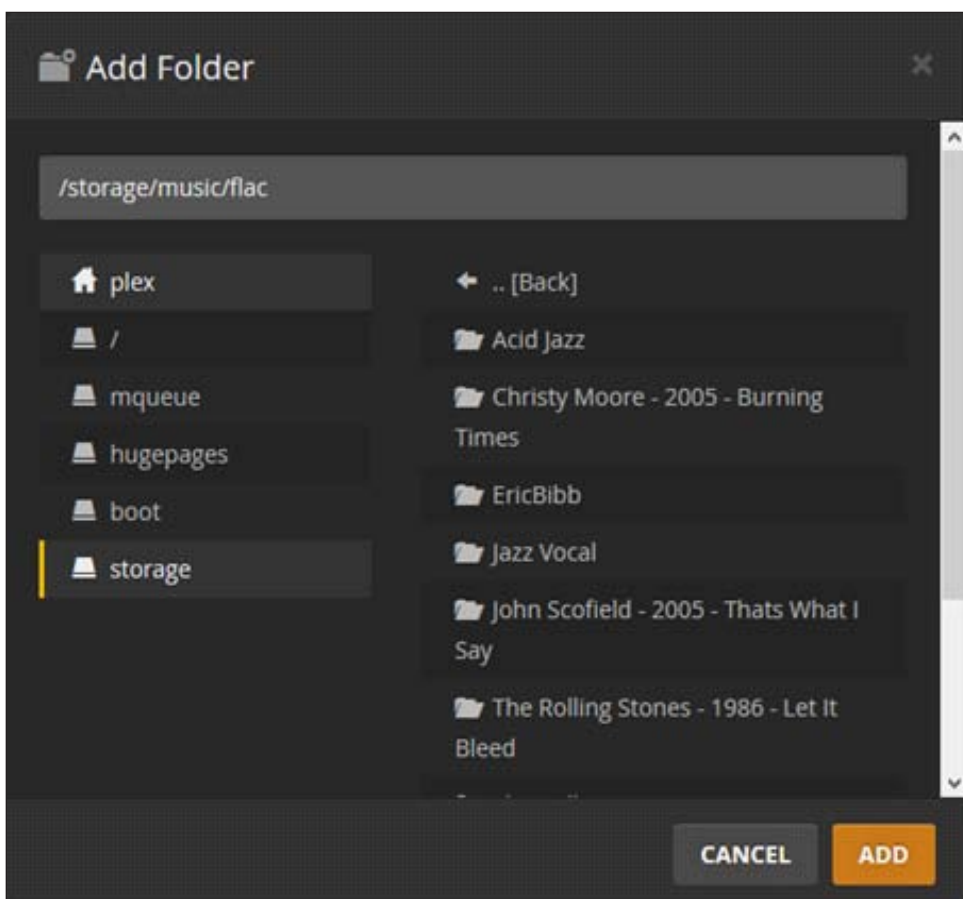
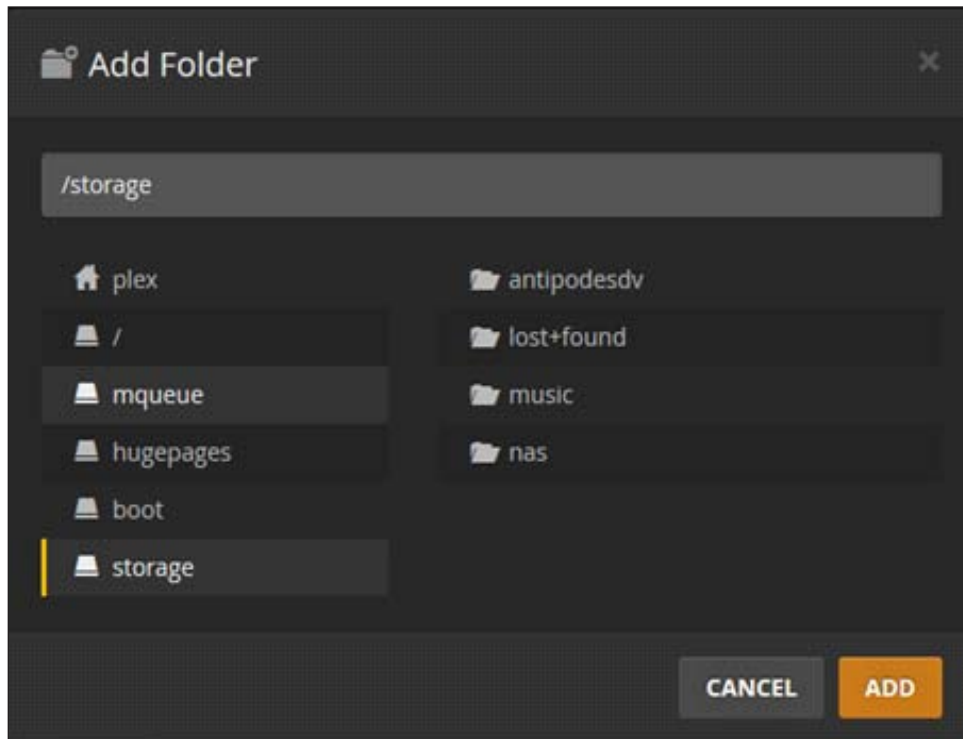


In the 'Add Library' window that appears select 'Music', give your library a name, and then click 'NEXT'.

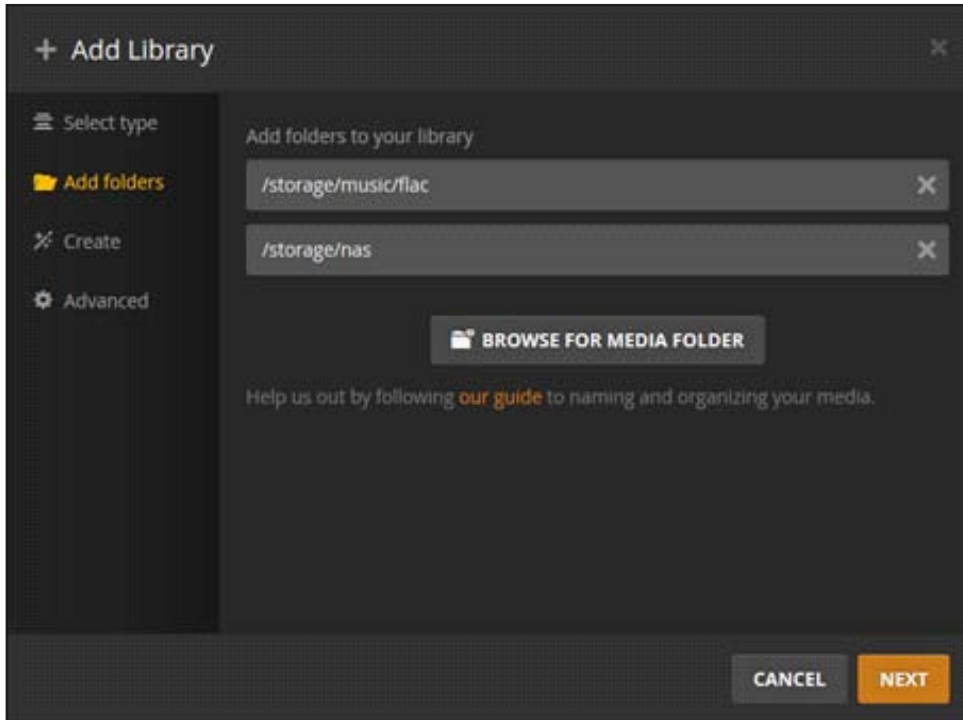




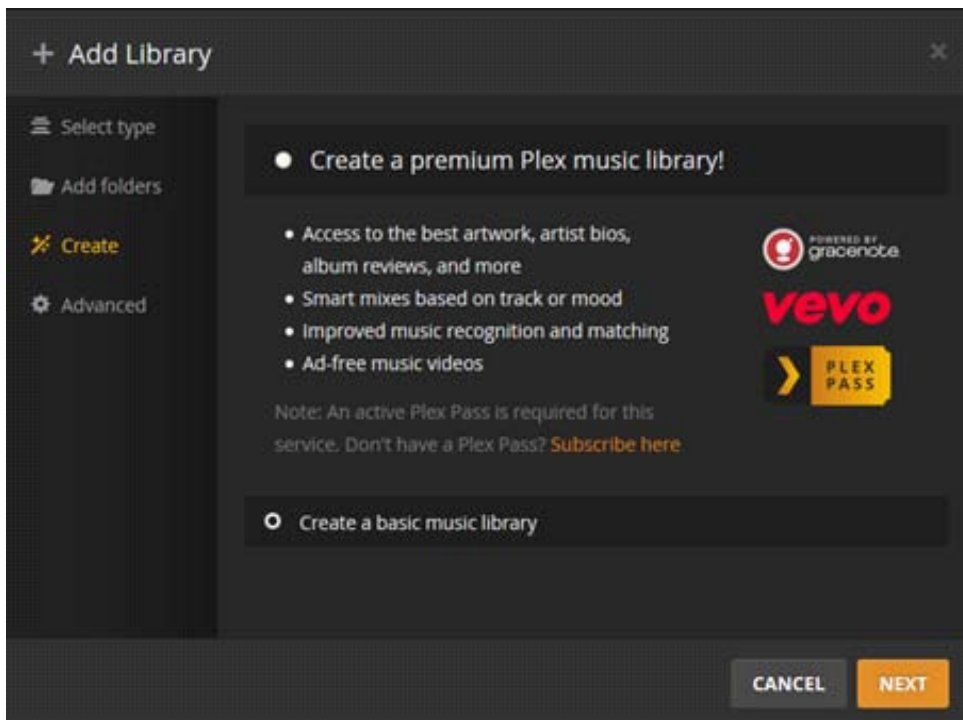
In the following screens you will select the folders to include in your music library. Click the 'storage' entry on the left hand side, then 'music', and finally 'flac'; this points to where album folders are stored on the Antipodes (/storage/music/flac).

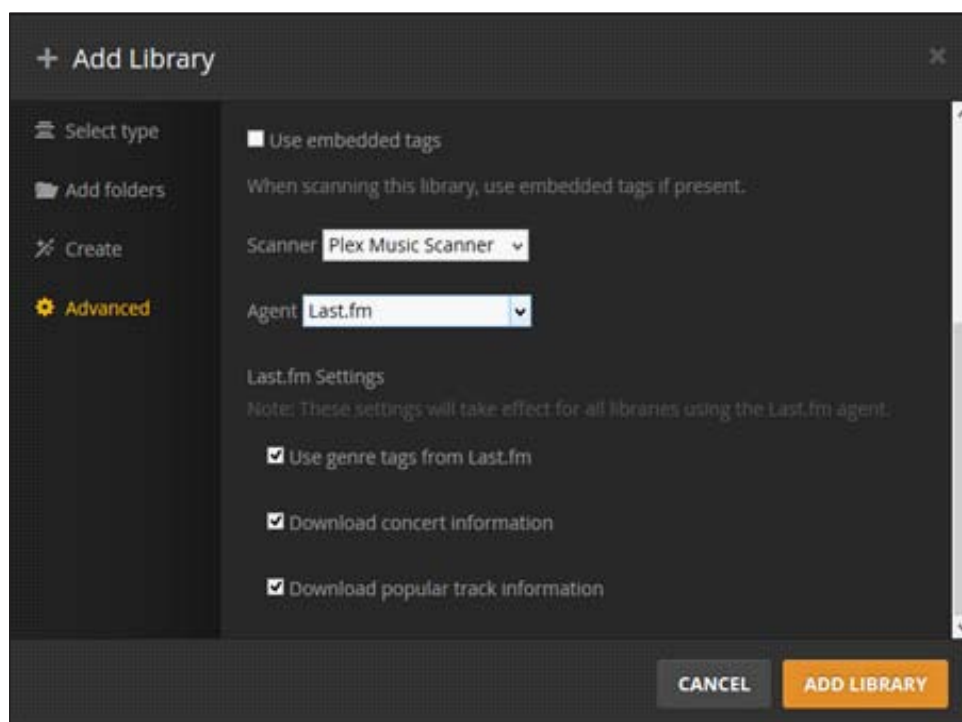


Then click 'ADD' to add the folder to your music library. You can add additional folders to your library now or later on; here '/storage/nas' has also been added.

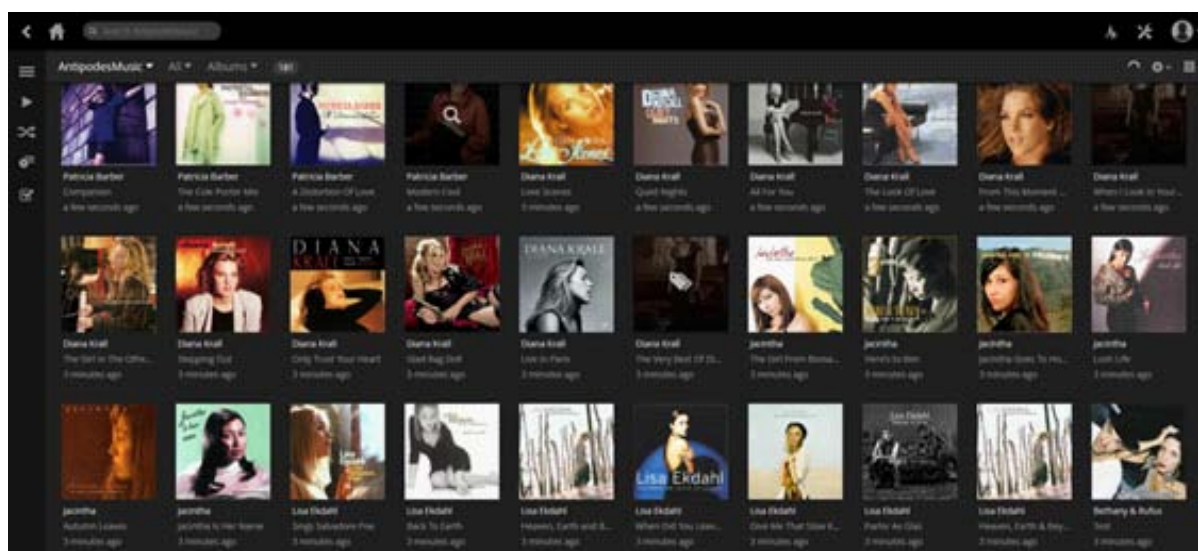


When you have finished adding folders click 'NEXT', select 'Create a basic music library' on the following screen followed by 'NEXT', and then 'ADD LIBRARY' on the last screen.





Plex Media Server will then create the library on your Antipodes.



### How to run Plex using a DLNA Remote App

While you can use the Plex Media Server application on the Antipodes to set up your Plex library you cannot use the application to play music through the Antipodes (although you can use it to play music on the Windows PC or Mac on which you are running the application). To play music from your Plex library through the Antipodes you must use a DLNA remote app; several apps are available for Android or for iOS

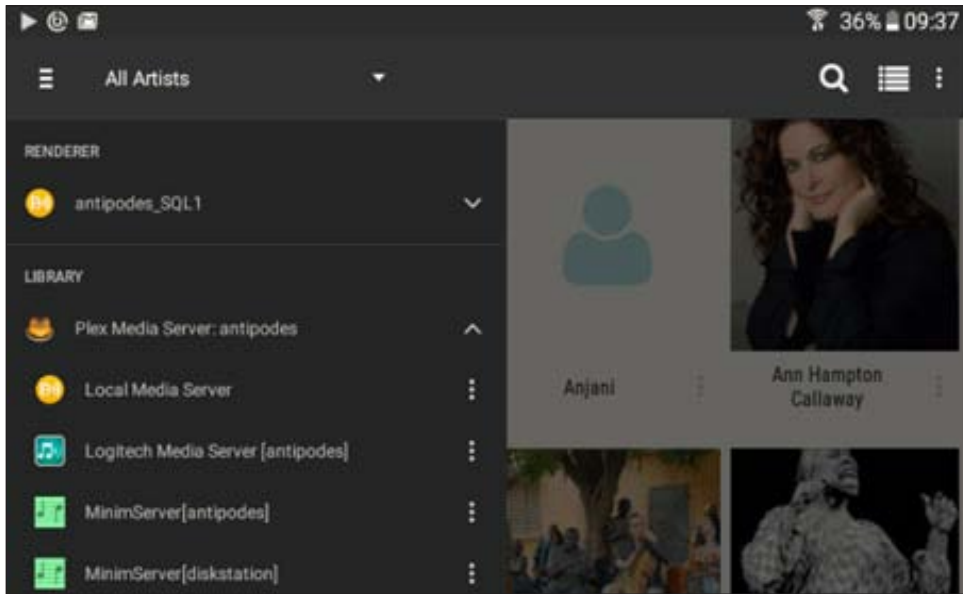
devices. You use the remote app to select a DLNA renderer (player) such as MPD or SqueezeLite on the Antipodes, and a DLNA server, in this case Plex.

The examples shown below use BubbleUPnP on an Android tablet.

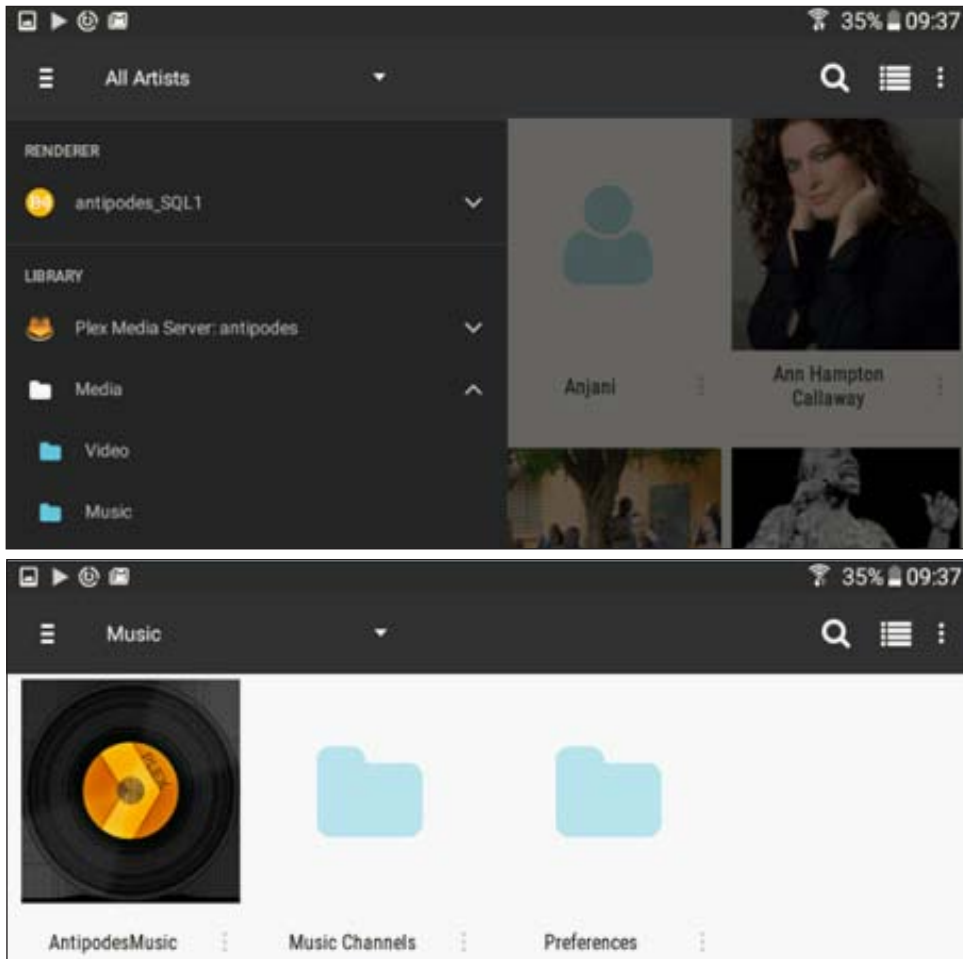
### Using BubbleUPnP with Plex

BubbleUPnP for Android can be downloaded from Google Play.

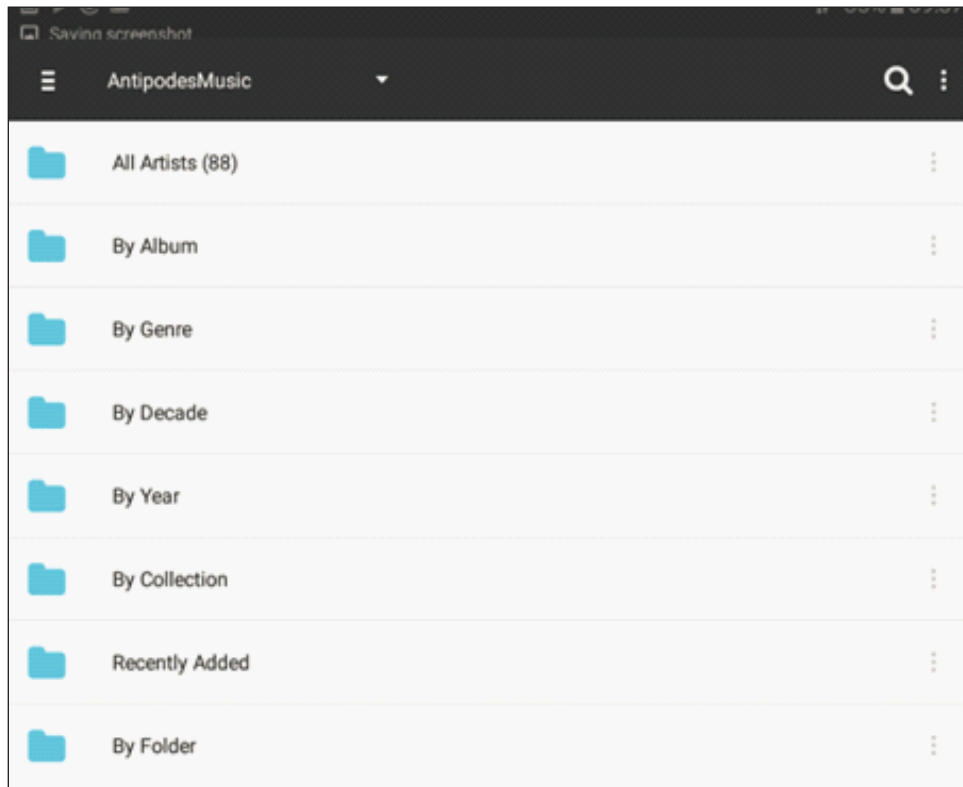
When you open the app on your tablet or smartphone the screen display shows the DLNA Renderers (at the top) and DLNA Servers that have been detected by BubbleUPnP. In this example the renderer 'antipodes\_SQL1' (Squeezelite on the Antipodes) is selected and there is a choice of several libraries (servers).



When 'Plex Media Server: antipodes' is selected you select 'Media/Music', and then 'AntipodesMusic' (the name given earlier to the library during the setup stage)



You can then drill down through your Plex library using a variety of filters to build and play your playlists.



## Support

Plex website: <https://plex.tv/>

Plex apps for Android, iOS, Windows: <https://plex.tv/downloads>

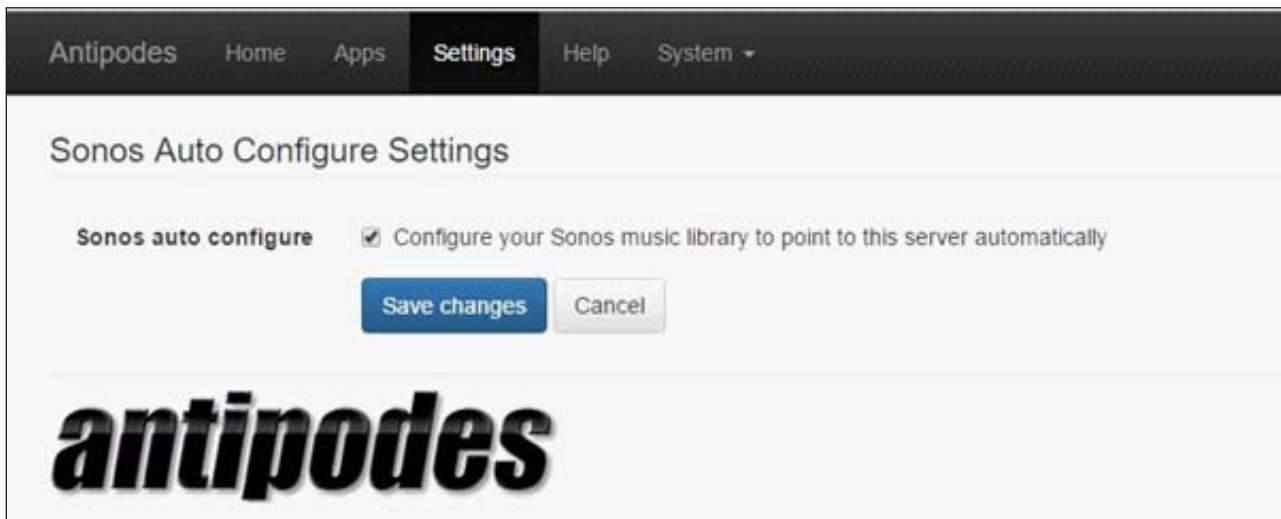
# 7.4 SONOS Integration

Install and setup this application and your Antipodes Music Server will appear within your SONOS application as a music source.

This means you can use your Antipodes music server to rip and store music, play to a high quality DAC in your stereo system, and have the same music available for playback using SONOS hardware, throughout your home.

SONOS Integration is not installed on your Antipodes server by default, so you will need to install it at the Antipodes GUI first. Go to Section 8 for a guide to installing and uninstalling apps in the Antipodes GUI.

Then select the 'Settings' menu item at the Antipodes GUI, click on the 'SONOS Integration' icon, tick the option to integrate with your SONOS system and click on the 'Save Changes' button.





# 7.5 HQPlayer NAA

Signalyst HQPlayer is an upsampling multichannel audio player for Windows, Linux and OS X. A light version can be optionally installed on the Antipodes server and then controlled by a copy of HQPlayer Desktop running on a PC or Mac. HQPlayer provides high levels of digital manipulation on the files, including room correction, digital volume, different digital filters, up-sampling, trans-coding etc.

HQPlayer NAA is not installed on your Antipodes server by default, so you will need to install it at the Antipodes GUI first. Go to Section 8 for a guide to

installing and uninstalling apps in the Antipodes GUI.

HQPlayer NAA is only a renderer application so you need to also install the HQPlayer main application on a desktop computer. Go to:

<http://www.signalyst.com/consumer.html>

and download and install the appropriate version of HQPlayer Desktop. HQPlayer Desktop requires a licence to be purchased. You can use the product for 30 days at no charge for evaluation.

**HQPlayer Desktop: 3.11.0**

[Download for Windows](#) trial / update.

[Download 64-bit for Ubuntu 14.04](#) trial / update.  
Kernel and libasound2 packages for native DSD support [here](#).

[Download for Mac OS X](#) trial / update.

## How to Run HQPlayer

To get the best performance from HQPlayer we recommend that your Antipodes server and PC or Mac are both Ethernet cable-connected to your network router. This however is not mandatory and you may find it works satisfactorily with wireless PC connection.

Once HQPlayer NAA is installed on your Antipodes there is no more to do in the Antipodes GUI than select HQPlayer NAA at the 'Audio App Switcher' (see section 4.4 of this guide).

But you need to complete the necessary setup in the HQPlayer desktop application - see the next pages for a guide to doing this.

HQPlayer NAA started.

**Audio App Switcher**

[Squeezelite](#)

[HQPlayer NAA Active](#)

This part of the guide refers to a third-party application that is not included with your Antipodes server, but we include it as a way to get started quickly with this application. For detailed and up to date information, you should visit:

Website: <http://www.signalyst.com/>

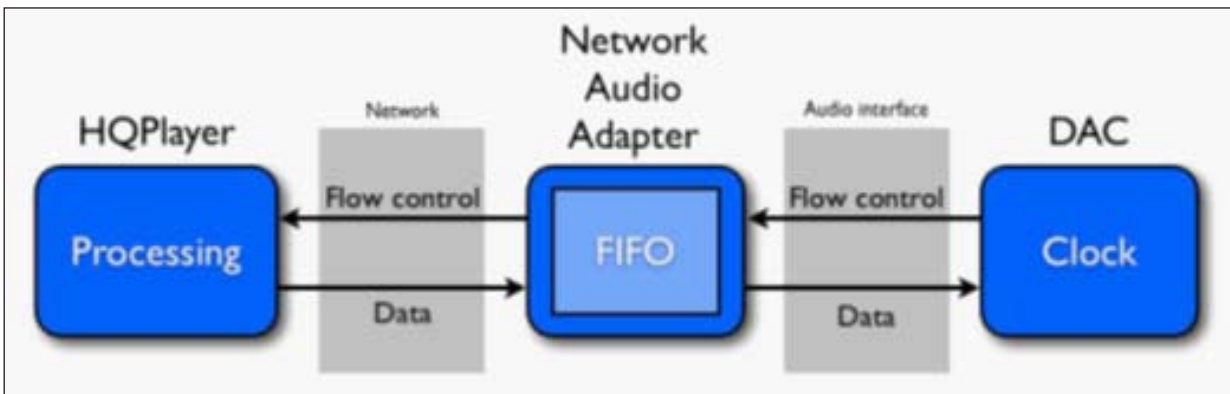
The HQPlayer Desktop User Guide can be found at: [i-cat.biz/pdf/HQPlayer-manual.pdf](http://i-cat.biz/pdf/HQPlayer-manual.pdf)

There is a very active HQPlayer community forum at:

<http://www.computeraudiophile.com/f11-software/hq-player-20293/>.

### Run HQPlayer on Windows or Mac

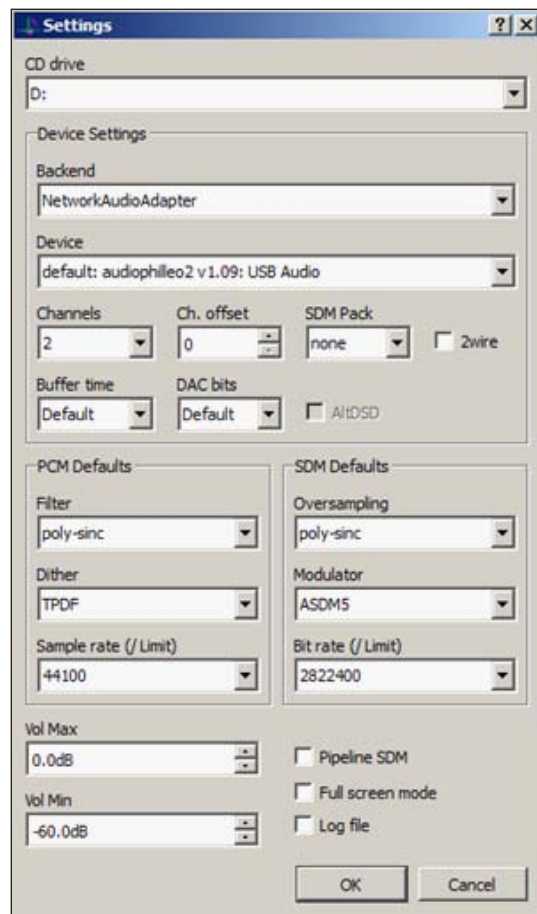
The audio processing is performed at the HQPlayer Desktop application side, and then streamed asynchronously over the network for reproduction on your Antipodes. In the diagram below the Antipodes is the Network Audio Adaptor.



### How To Set Up HQPlayer on Windows or Mac

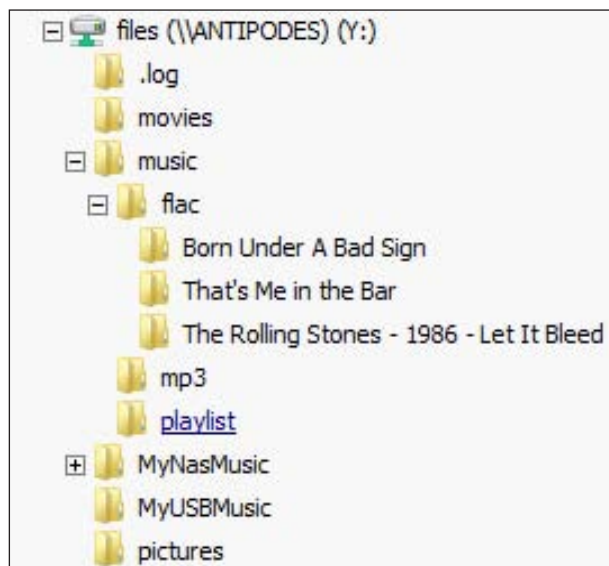
Start HQPlayer NAA on your Antipodes server and then start the HQPlayer Desktop application on your PC or Mac. Click 'File/Settings'.

Under 'Backend' select 'NetworkAudioAdapter'. Under 'Device' select the entry that matches the name of you DAC or USB adapter ('audiophileo2' in the above example). Then click 'OK'.

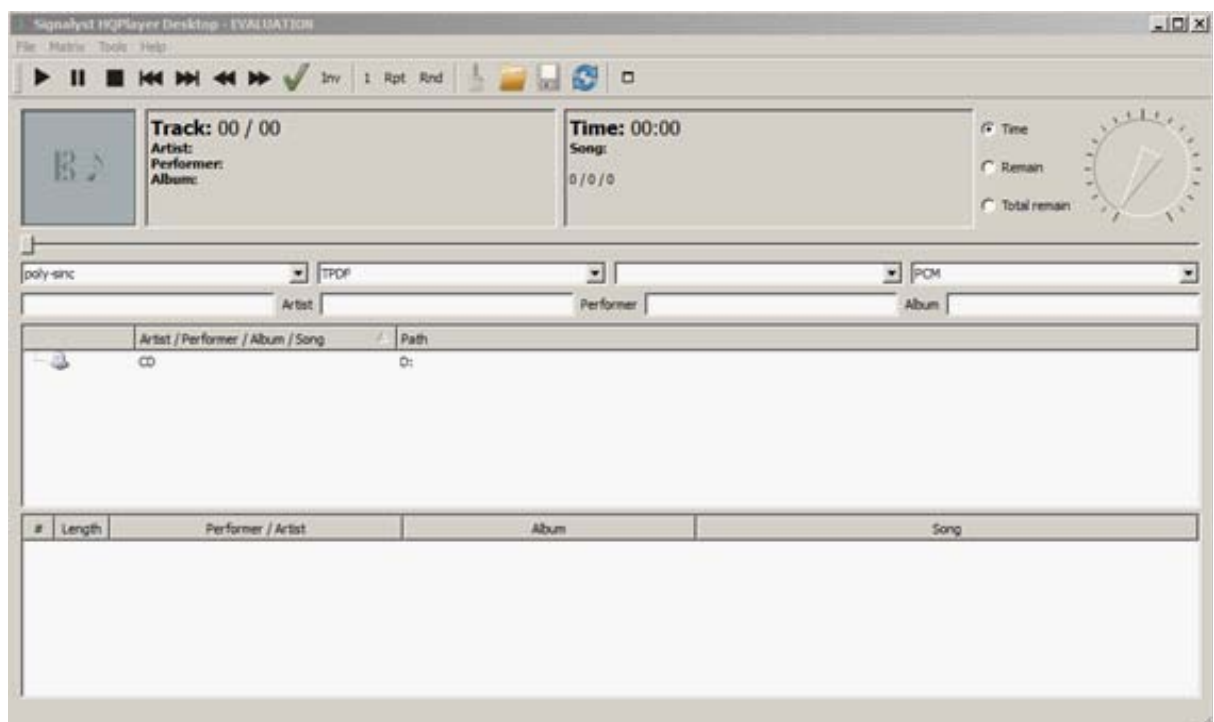


## How To Use HQPlayer on Windows or Mac

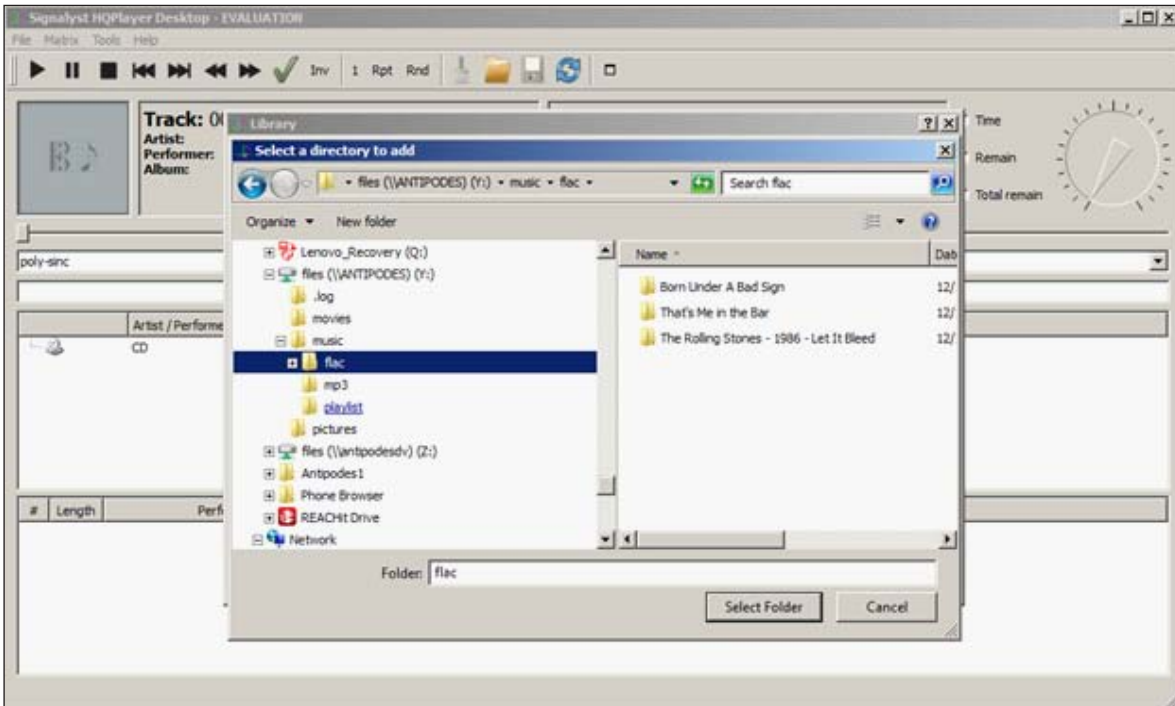
The music library that HQPlayer Desktop works with is a Windows or OS X folder. It is therefore necessary to map your Antipodes music library as a shared network drive, as shown, in order to play music files using HQPlayer.



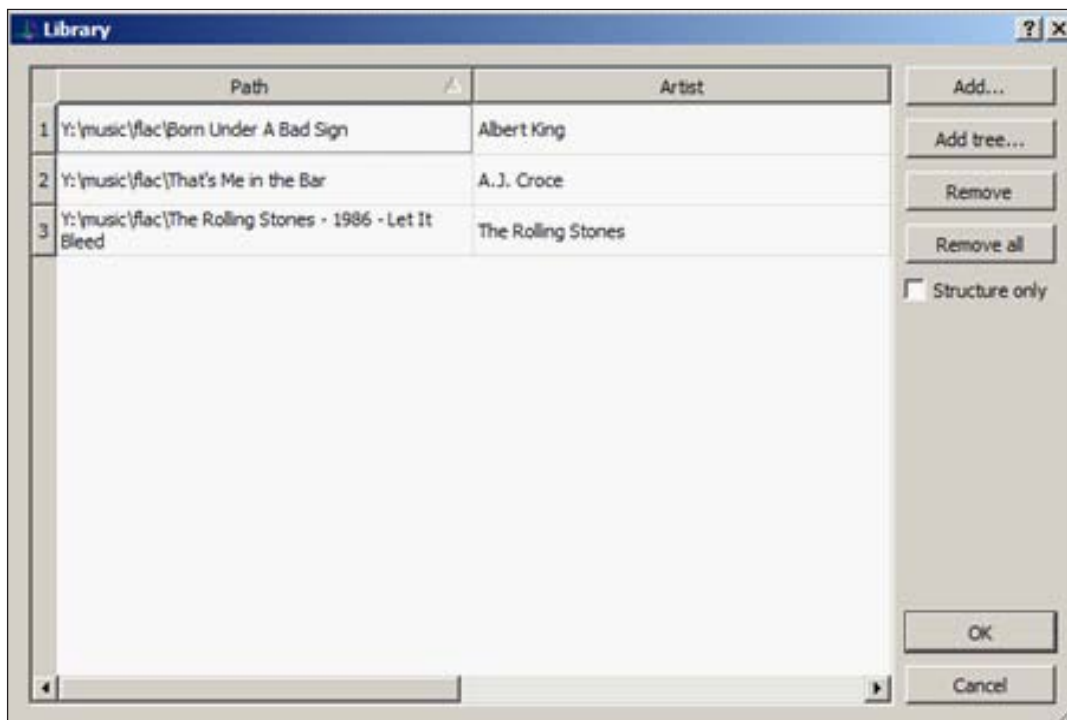
When you start HQPlayer Desktop for the first time you will be presented with a blank screen.



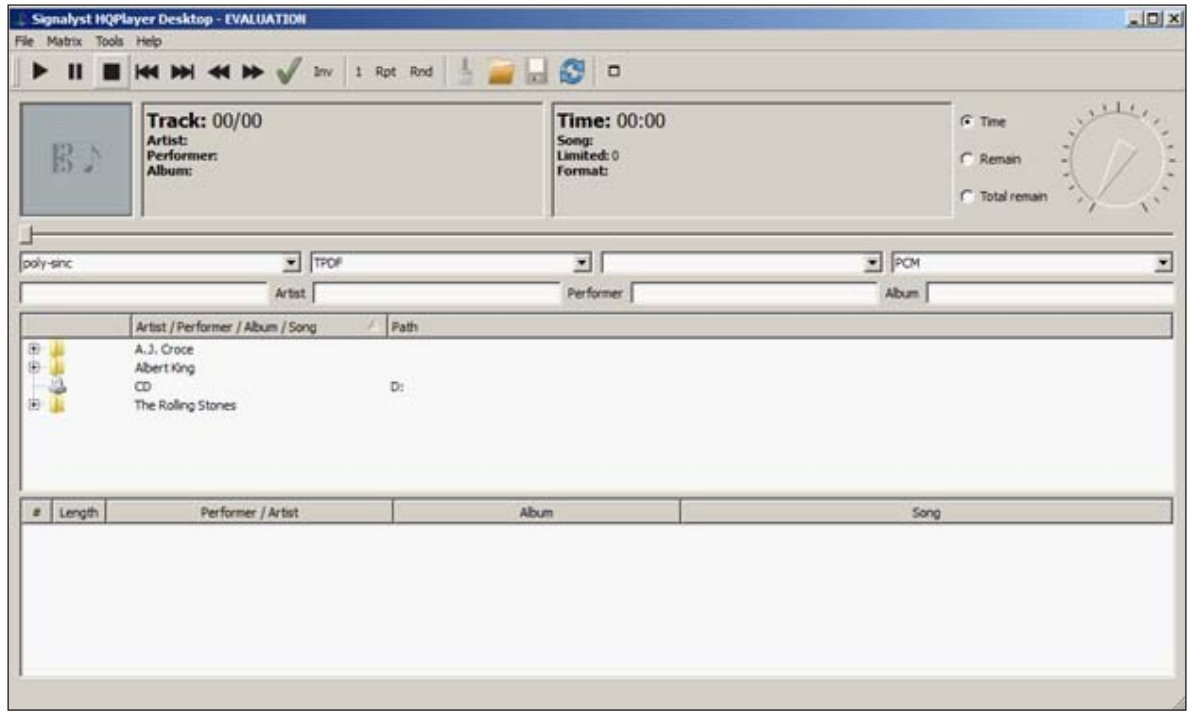
To start adding music files to HQPlayer click 'File/Library' and then 'Add' (for individual files) or 'Add Tree' (to add a folder).



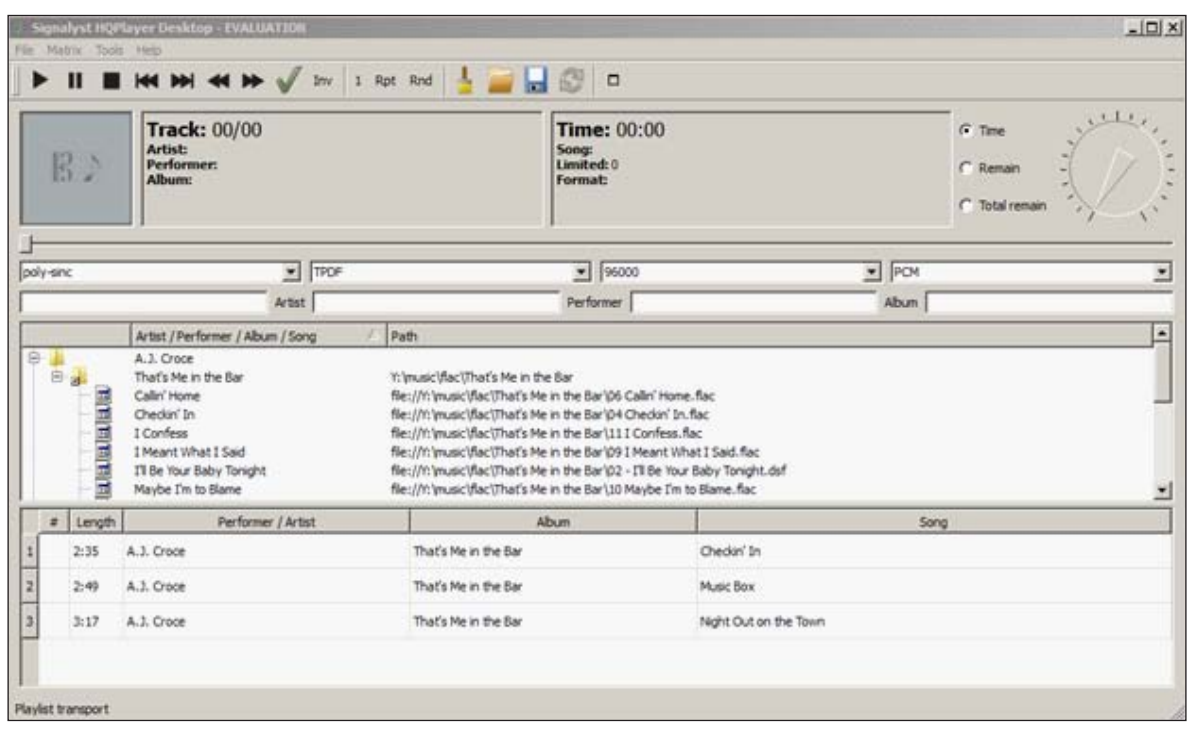
Select a folder, such as the 'flac' folder shown above, and then click 'OK'.




The contents of the selected folder, i.e. album folders, will be displayed in the middle (library) pane.

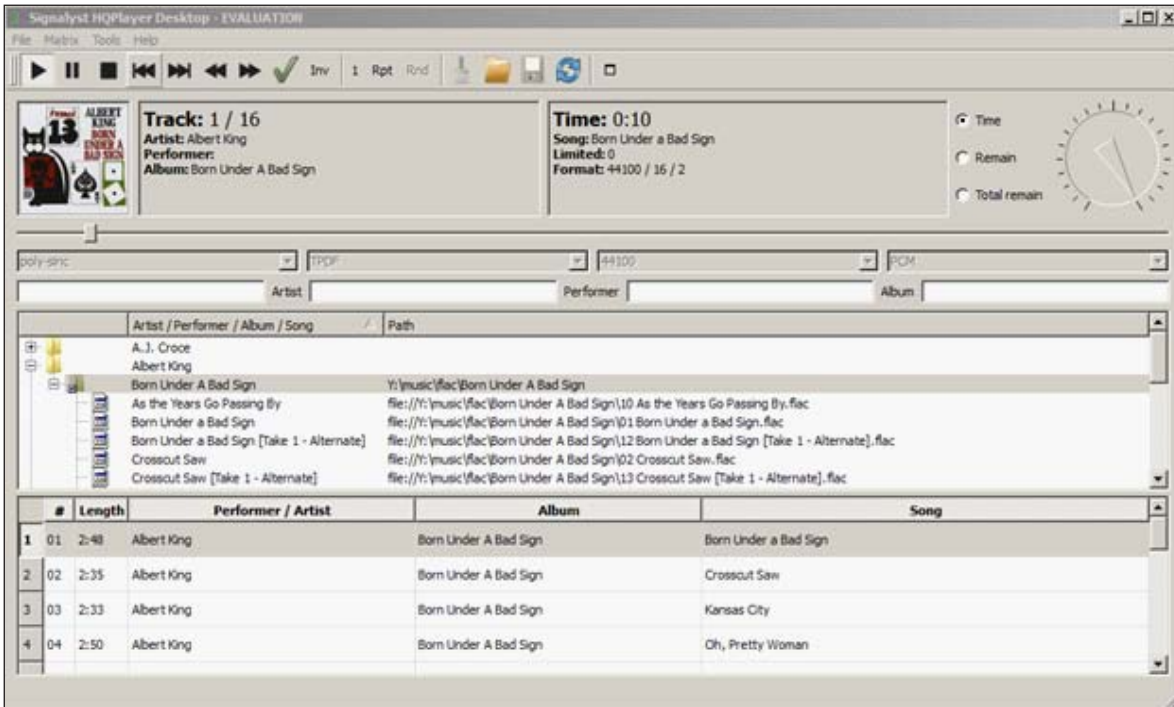



You can then drill down through the folder views, select albums and/or tracks and add them to the bottom (playlist) pane.





Then click the first, or any track, in the playlist, or  to start playing music.



There is also a full-screen mode selectable (  at the right hand end of the task bar).

