

# 6 Add Music To The Server Library

## INTRODUCTION

There are four ways you can add music files to the library of a server application running on your Antipodes.

The first three ways involve adding files to the internal storage of your Antipodes, by:

1. Ripping CDs to the Antipodes
2. Copying files to the Antipodes
3. Downloading music over the internet to the Antipodes

The fourth way is:

4. Adding music files to the library by mounting external storage (eg. on a NAS, USB, etc)

In general, we recommend that music files be added underneath this folder on your Antipodes.

**/storage/music/flac**

This location is automatically added into the library of every server application on your Antipodes.

You can create other folders alongside the 'flac' folder if you wish, but it means you need to tell each server application to add these folders to the library.

It is therefore simpler if you add folders under the 'flac' folder.

Music files do not need to be flac files. They can be in any format.

### Roon Server

Note that if you are using Roon, then Roon Server offers a way to add external shared directories, such as on a NAS, to the Roon library.

If using Roon we recommend you use the method in Roon Server settings rather than the method described in Section 6.4 of this guide.

# 6.1 Import Music From Your CDs

The CD Import application automatically rips CDs, retrieving artwork and metadata tags. Just insert the CD (label up) into the Antipodes, and wait until the CD ejects.

You can also specify whether music is ripped to

compressed FLAC (to save space), or uncompressed FLAC (to optimise playback sound quality). Click on 'Settings' and then click the CD Import icon. At the screen below, select the FLAC compression setting and then 'Save Changes'.



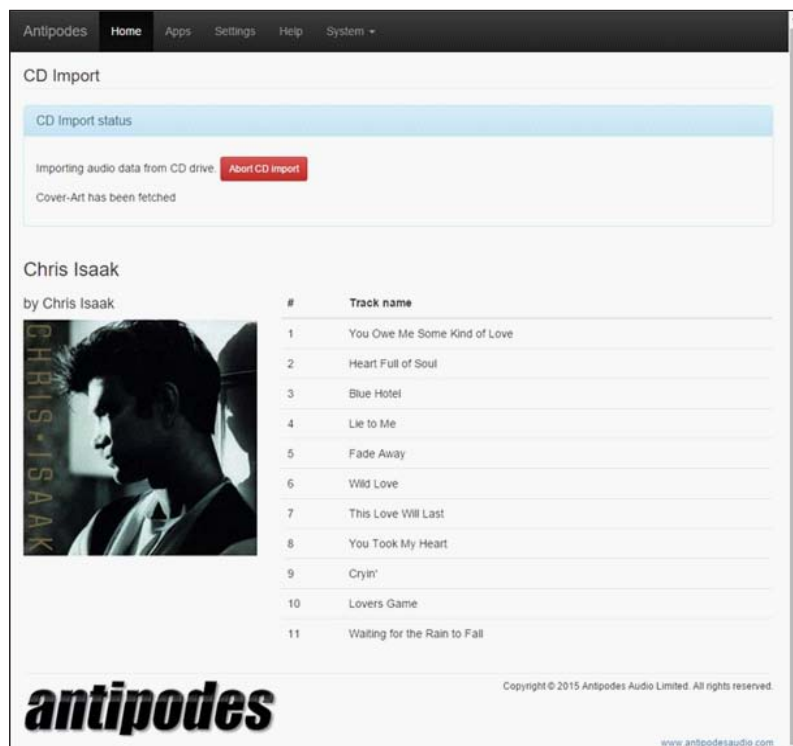
To observe the ripping progress, click on 'Apps', then on the 'CD Import' icon.

If you wish to abort the ripping process click on 'Abort CD Import'.

The ripping is completed in paranoid mode. This means each segment is read twice. If the rips are not identical then the ripping speed is reduced until two identical rips are achieved.

This takes at least twice as long as a normal ripping process but will guarantee you the best possible rip. It is worth the time taken to do it correctly.

Not all Antipodes music servers have integrated rippers, but you can add an Antipodes Platform to add auto-ripping. You can also add your own USB CD optical drive to use the CD Import application, simply by attaching it to the Storage USB port.



## 6.2 Copy Music To The Server

To copy files to or from your Antipodes, or delete files on your Antipodes, open File Explorer (Windows) or Finder (Mac).

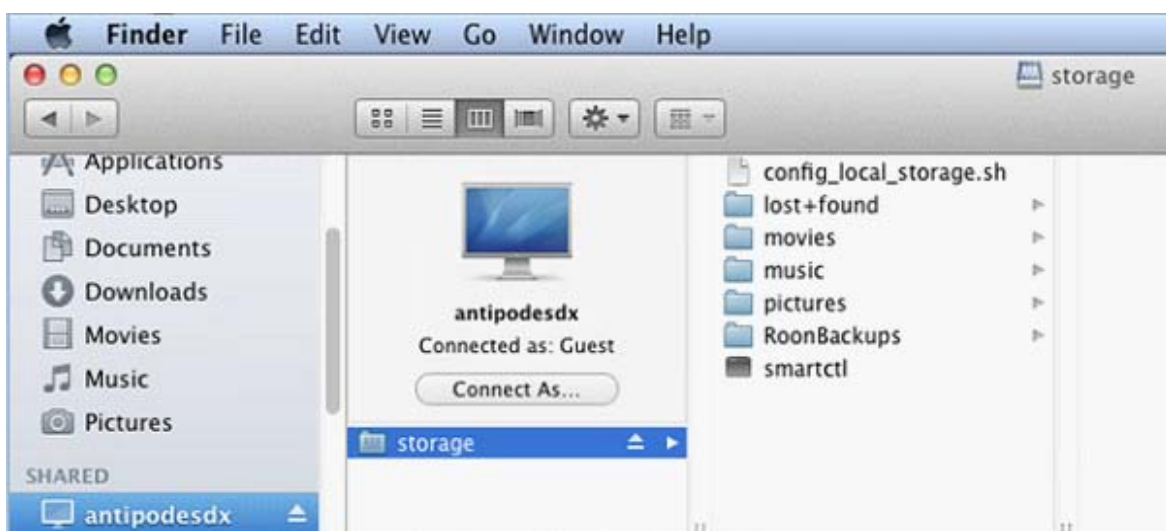
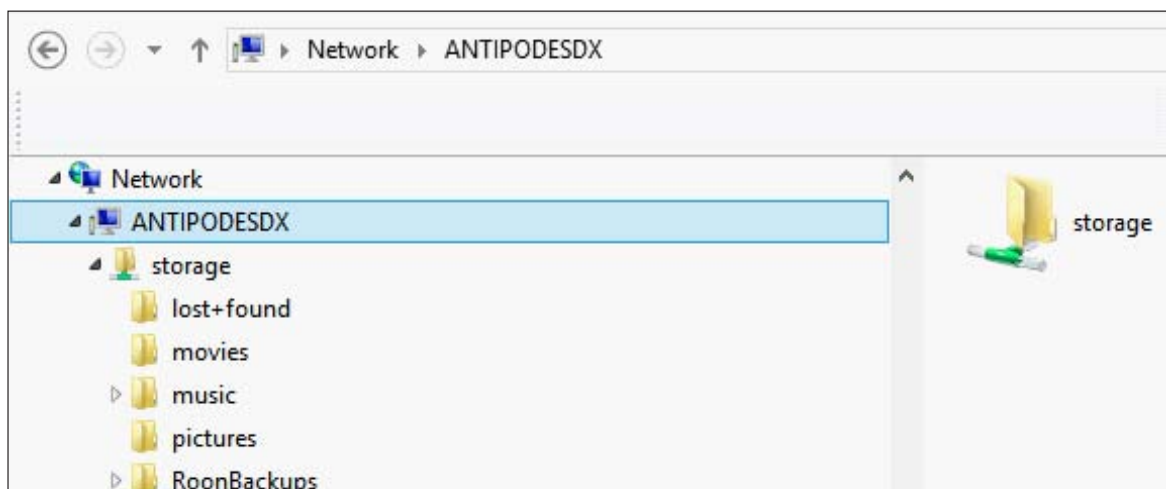
Antipodes will usually show in the left pane under 'Network' (Windows) or 'Shared' (Mac). You can now copy and delete files in the same way as if they were located on your computer.

If 'antipodes' does not show in File Explorer then there may be a network problem. Enter the address of your Antipodes in the address bar of File Explorer - eg. \\antipodes\storage, or

\\192.168.1.214\storage

(use the IP address found by browsing to myantipodes.com).

Similarly if Antipodes does not show under 'Shared' in Mac Finder, click Finder menu item Go, and then sub-menu item Connect To Server. In the dialogue box that appears, enter address `smb://antipodes/`, or `smb://192.168.1.214` (but use your actual IP address, this is just an example) and click Connect. If you are asked for a username, click on the Guest option. This will open Antipodes in Finder.



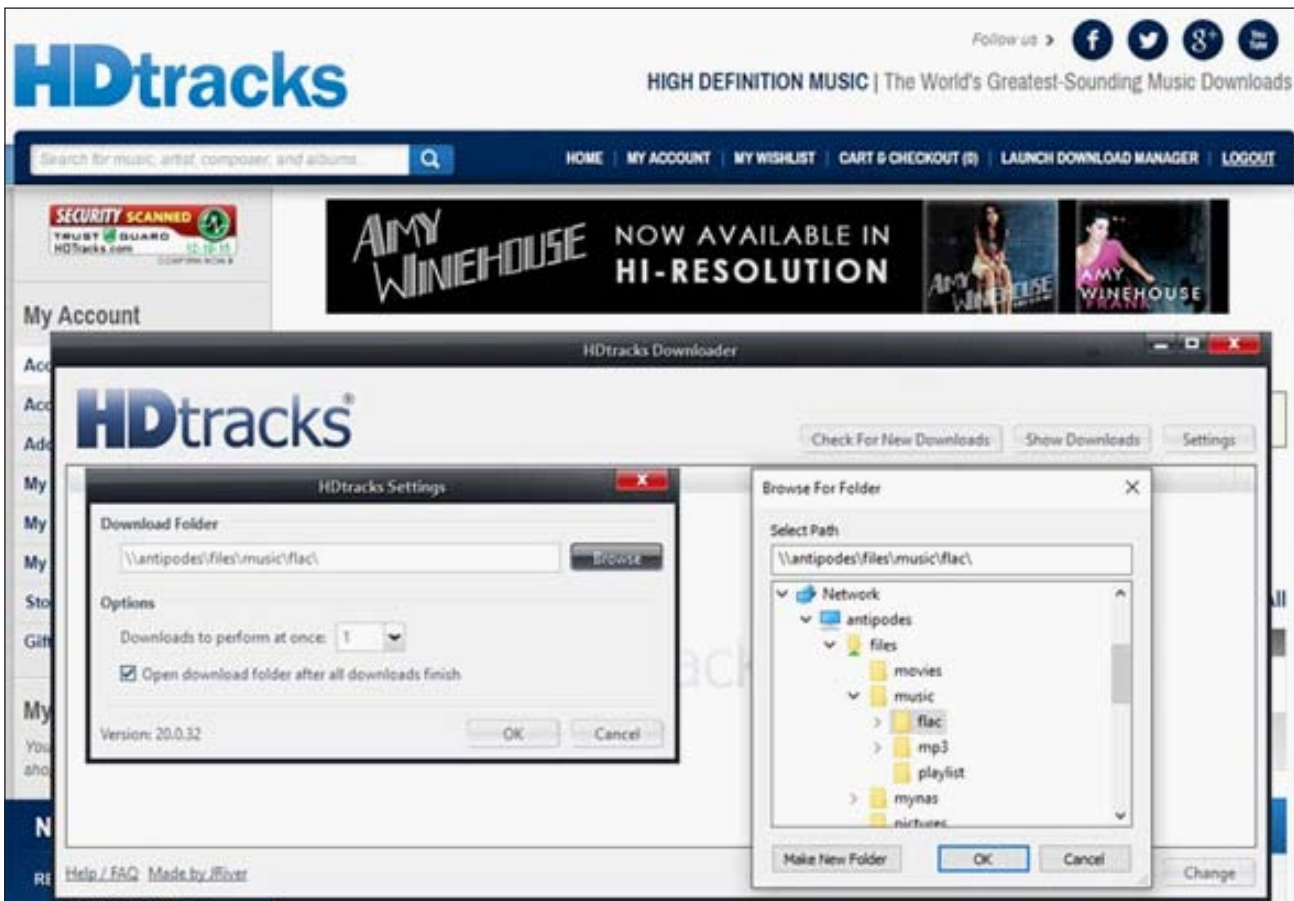
# 6.3 Download Music To The Server

In this example we have used the HDTracks downloading application. When you start a download, click on the HDTracks 'Settings' button.

You can either type in the address '\\antipodes\

storage\music\flac', or click on the 'Browse' button to locate the download location on the Antipodes.

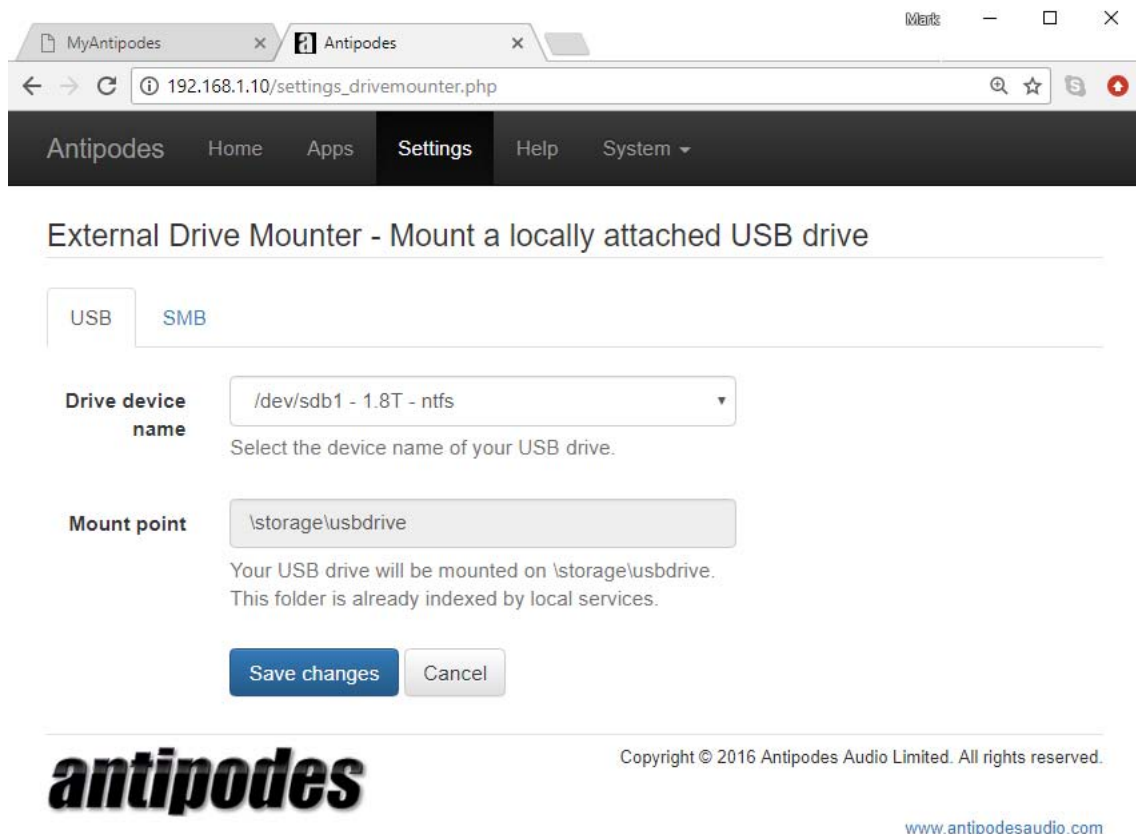
Once you have set this, the HDTracks application will remember it for future downloads.



# 6.4 Mount External Storage

The Drive Mounter app lets you 'mount' an external USB drive or a folder on your home network that is on PC or NAS and play music tracks stored on them. To be able to play music from a USB drive:

1. Connect the drive to a spare USB port on the back of the Antipodes
2. At the Antipodes GUI, select the 'Settings' menu
3. In 'Settings', click on the 'Drive Mounter' icon.

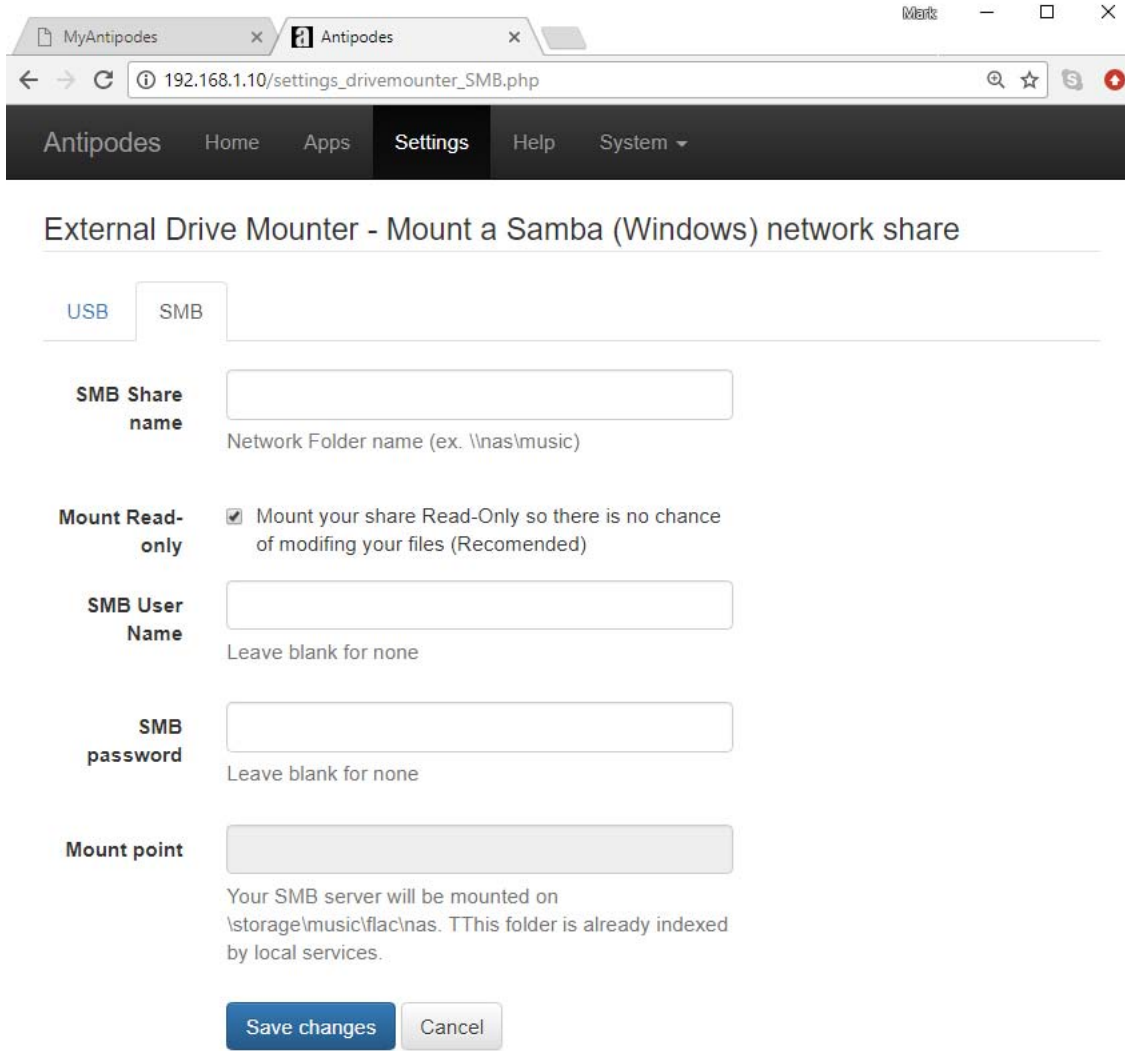


Select the USB drive from the drop down list and click on 'Save Changes'.

The USB drive selected is now mounted on \storage\usbdrive on your Antipodes.

The Drive Mounter app also lets you 'mount' files stored on a NAS or any network share.  
To be able to play music from a USB drive:

1. At the Antipodes GUI, select the 'Settings' menu
2. In 'Settings', click on the 'Drive Mounter' icon
3. Click on the 'SMB' tab.



Copyright © 2016 Antipodes Audio Limited. All rights reserved.

[www.antipodesaudio.com](http://www.antipodesaudio.com)

1. Enter the network address of the files
2. Provide User Name & Password for the device the files are on

3. Click on 'Save Changes'.

Your remote files are now mounted on your Antipodes and can be added to your library for playback.